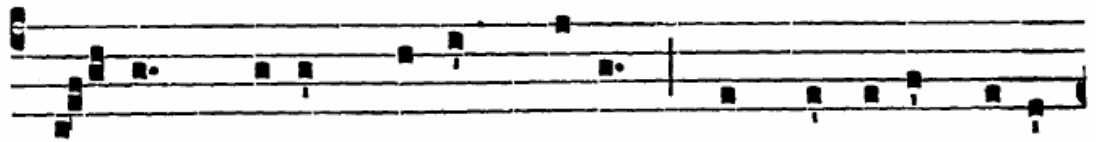
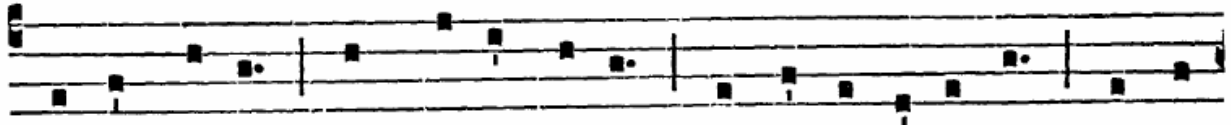


5.

A



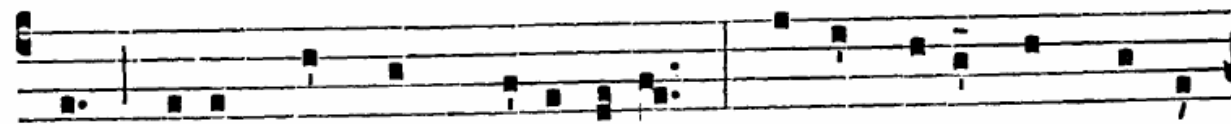
Alma * Redemptó-ris Máter, quae pérvia caéli



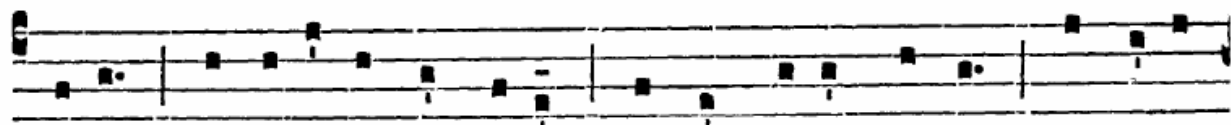
pórta mánes, Et stélla má-ris, succúrre cadénti súrge-



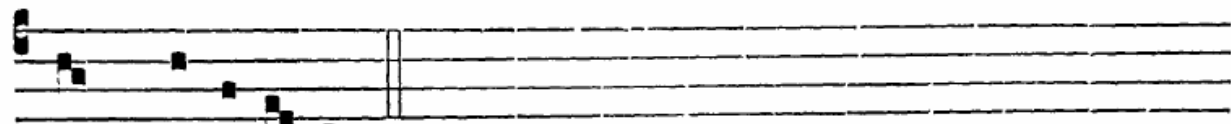
re qui cúrat pópu-lo : Tu quae genu-ísti, natúra mi-rán-



te, tú-um sánctum Geni-tó-rem : Vírgo pri-us ac posté-



ri-us, Gabri-é-lis ab óre súmens illud Ave, peccató-



rum mi-se-ré-re.