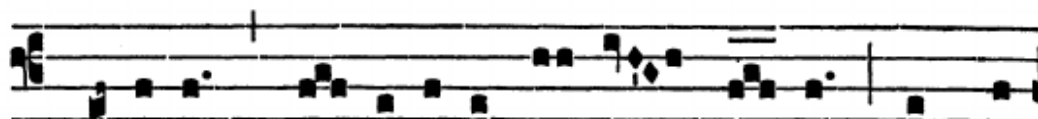
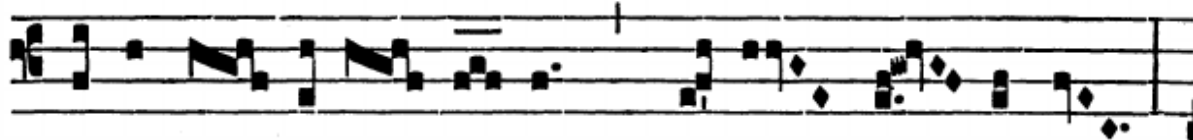


Intr.

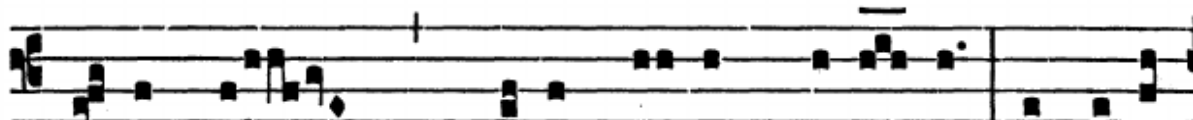
2.

D

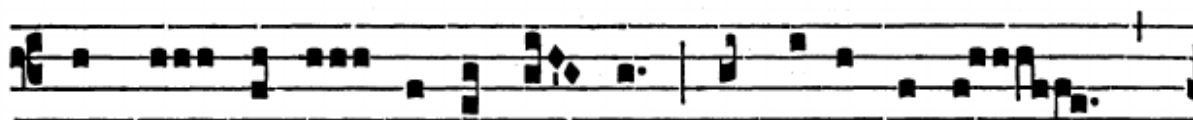
O-mi-nus * for-ti-túdo ple-bis su- ae, et pro-



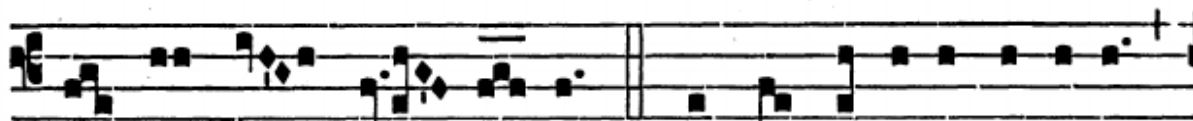
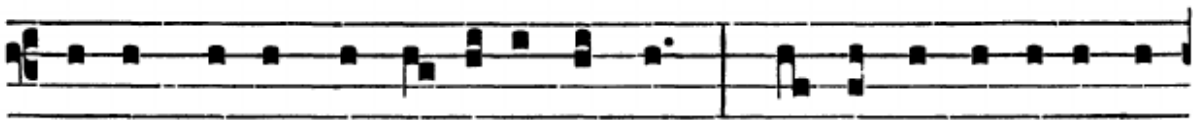
téc-tor sa- lu- tá- ri- um Chri-sti su- i est :



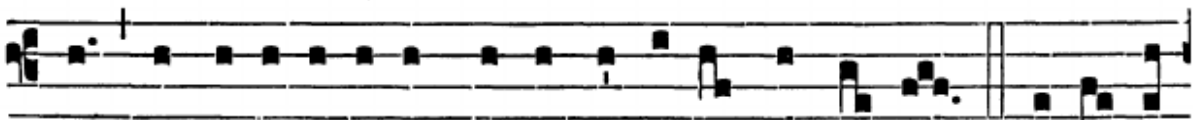
salvum fac póp-u-lum tu- um, Dómi- ne, et béne-



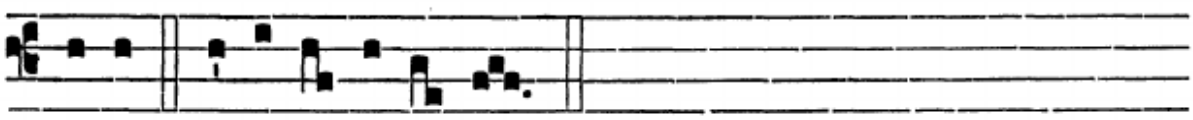
dic he- re-di- tá-ti tu- ae, et rege e- os

usque in saé- cu- lum. *Ps.* Ad te Dómi-ne clamábo,

De- us me- us ne sí- le- as a me : * nequándo tá- ce- as a



me, et assimi-lábor descendéti-bus in la-cum. Gló-ri- a



Patri. E u o u a e.